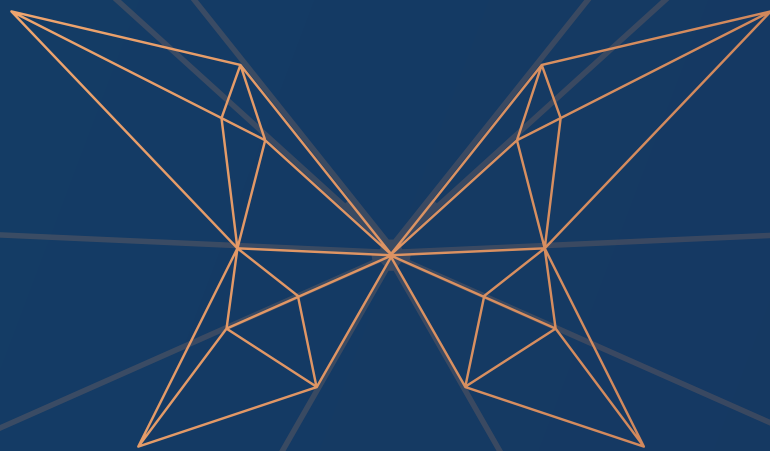


A MASTERPIECE BY

PLATINUMTM
GROUP



EVERY
SUCCESS STORY
NEEDS A

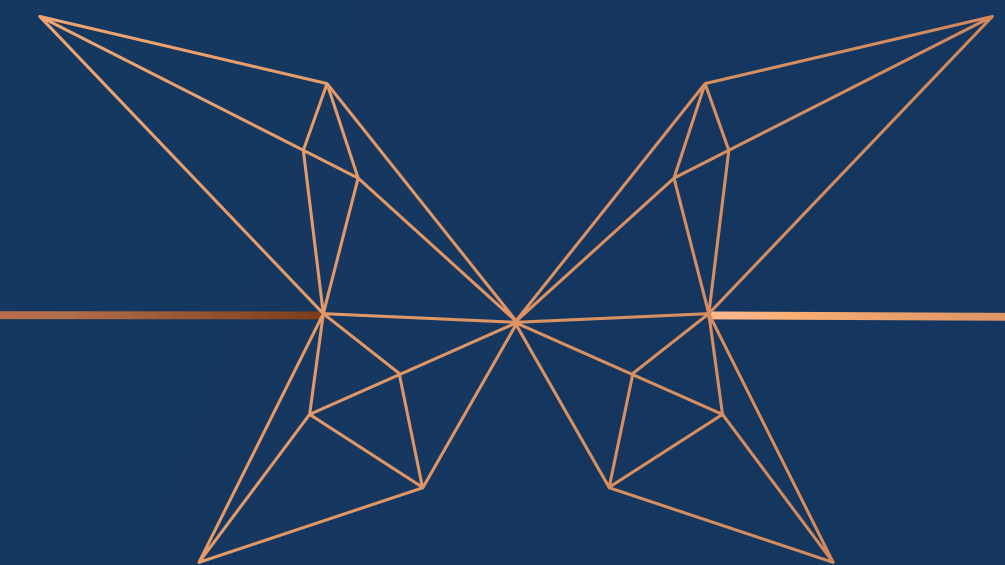
Mouthpiece



ABOUT PLATINUM GROUP

Heralded a classicism in the art of home making, leveraging on the business acumen & a two-decade expertise of specialists like Late Shri Dharamshi Patel, Shri Girish Chheda, Shri. Virchand Visaria, Platinum Group was officially incorporated in 2006, Today, driven by the second generation, the group has re-written the rules of graceful living by completing multiple projects in Navi Mumbai. Renowned in the core business of construction & property development, every project of ours is a landmark which needs no address proof to differentiate

Platinum Group has always enjoyed a great amount of trust and loyalty from its patrons over all these years. The company is managed by highly qualified professionals who are fully engrossed to ensure that the company maintains its high standards in quality construction, timely delivery, and customer satisfaction, which helps it to enjoy an extremely resonant reputation in the construction industry.





A legacy of refined living.

^ LIFETIME OF BRILLIANCE

Excellence is never just a coincidence; neither it is momentary. We at Platinum Group demonstrate brilliance through our every idea, execution, creation, and relationship. We redefine excellence every time with our thoughts, actions, and executions. Being reliable and renowned real estate thought leaders, we build legacies, much more than just architecture. With years of expertise, we aim to foster uber-luxury spaces that exude sheer opulence.

18 | **22** | **2,200+**
Years of Perfections | Icons Delivered | Homes Delivered

2 Million | **7**
Sq.Ft Completed | Icons in Making

OUR GLORIOUS LANDMARKS



PLATINUM
ESCASO
ULWE, NAVI MUMBAI



PLATINUM
EMPORIUS
ULWE, NAVI MUMBAI



PLATINUM
CRESCENZO
SEAWOODS, NAVI MUMBAI



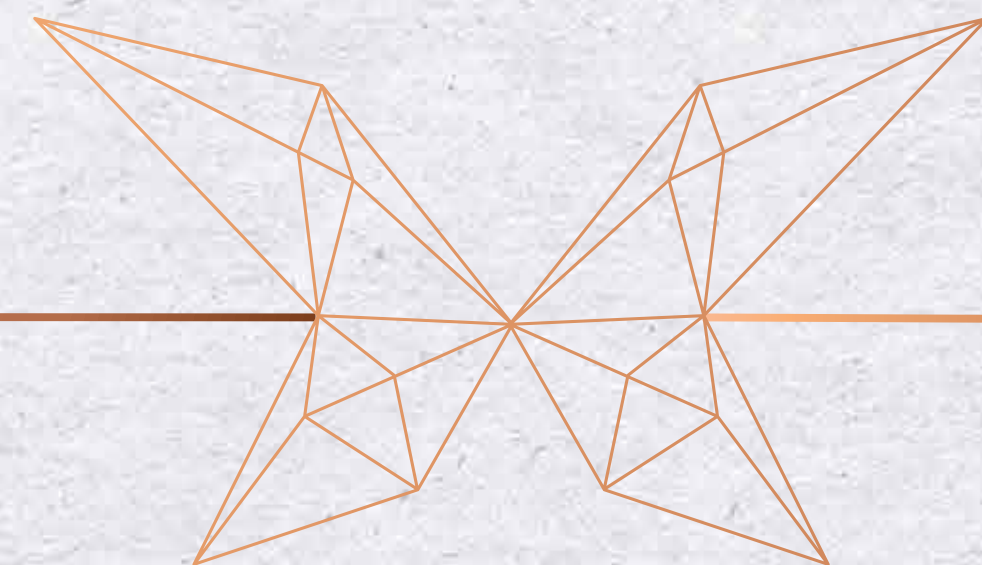
PLATINUM
PALMWOODS
SEAWOODS, NAVI MUMBAI



PLATINUM
EXPERIO
KALAMBOLI, NAVI MUMBAI



ONE
PLATINUM
C.B.D. BELAPUR, NAVI MUMBAI



Our pillars that etch

MAGNIFICENCE IN OUR CREATION

We have not only imbibed the art of perfection but also mastered the way and made it our practice. We are a team of real estate industry leaders, engineers, architects, and realty experts dedicated to crafting visionary spaces. With a shared passion for innovation, customer satisfaction, and a commitment to excellence, we work collaboratively to bring your aspirations into reality.



PROJECT ARCHITECT
MR. ATUL PATEL
(Atul Patel Architects)



INTERIOR DESIGNER
MRS. SHIMONA BHANSALI
(Design Hex)



STRUCTURAL RCC CONSULTANTS
MR. AJIT GOKHALE
(A . G . Gokhale & Associates)



LEGAL ADVISOR
MR. HIMANSHU BHEDA
(Himanshu Bheda & Associates)



MEP CONSULTANT
MR. KAVIRAJ JADHAV
(ECPHCL)



LANDSCAPE CONSULTANT
MRS. LAJJA SHAH
MRS. TRUPTI SAWANT
(Greenscape Consultants)



Partnering with the finest

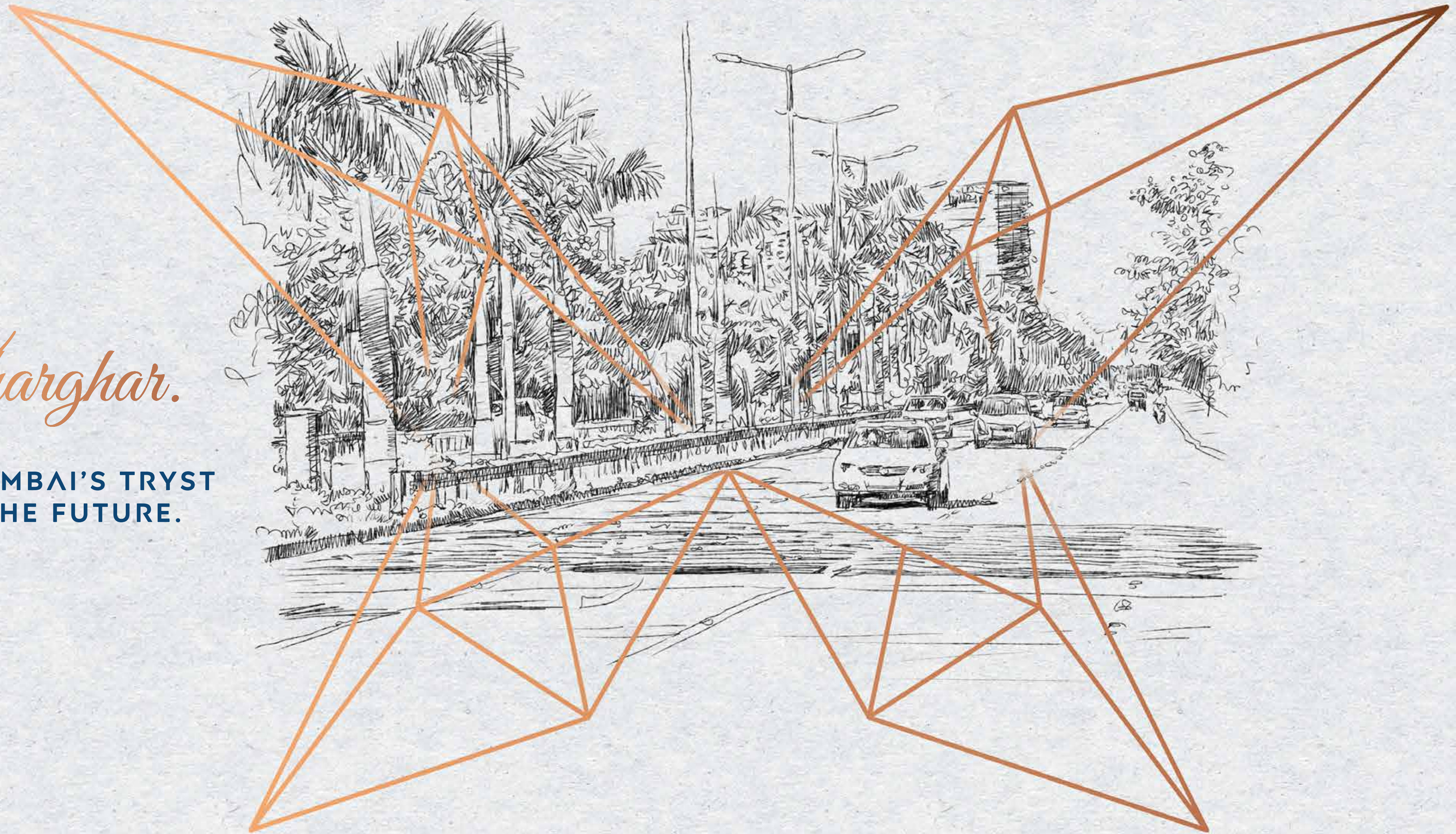
FOR THE FINER ONES

Our commitment to quality and sophistication is mirrored in the brands we choose to associate with. We partner exclusively with the most prestigious brands in the industry to ensure that your journey in the world of luxury real estate is nothing short of extraordinary.



Kharghar.

NAVI MUMBAI'S TRYST
WITH THE FUTURE.



PLATINUM PARK SYDE

SECTOR 30, KHARGHAR

LOCATED AMIDST THE SERENE ENVIRONS OF KHARGHAR.

- Proposed KHARGHAR - TURBHE TUNNEL ROAD at 2 Mins. Drive
- Upcoming CORPORATE PARK BKC 2.0 at 2 Mins. Drive.
- Central Park, ISKCON Temple, Golf Course at 5 Mins, drive.
- Empreyan School at 2 Mins. walking distance.
- Tata Memorial Hospital at 2 Mins. drive.
- Metro Railway Station at 3 Mins. drive.
- Upcoming Football Stadium at 5 Mins. drive.
- NMIMS deemed University at 5 Mins. drive.
- Vishwajyot High School at 5 Mins. drive.
- Ramsheth Thakur Public School at 7 Mins. drive.
- Kharghar Railway Station at 12 Mins. drive.
- Sion - Panvel Highway at 10 Mins. drive.
- Mumbai - Pune Expressway at 15 Mins. drive.
- Upcoming International Airport at 30 Mins. drive.



LOCATE US



INFRASTRUCTURE DEVELOPMENT AT

Kharghar.

Kharghar is transforming to be an aspiring destination with the quality of life, breathtaking mosaic opportunities & better connectivity that it offers. People are moving towards this place for its natural condition and one can easily see that it is already home to many industries and some big-name brands. Infrastructure development at Kharghar will be a game changer and provide significant boost to the city's real estate potential. The structures can revolutionize the public life in Mumbai as it offers several benefits to people living in the area. Kharghar is among the most sought-after areas of the city because of its close proximity with Navi Mumbai. The infrastructure here is growing rapidly. A resident of Kharghar can access a whole variety of amenities with ease and enjoy all the lush greenness that this region holds for its residents.

Facilities are changing rapidly with time and saying 'Kharghar' creates its own rustic ambience. You are likely to have exposure to a variety of amenities at Kharghar which is incomparably superior compared to those present in any other locality in Navi Mumbai.

It is surrounded by a railway station, an international airport and one of the biggest ports in India. Such an environment has made the real estate prices here to attract people from all over India. There are many educational institutes, hospitals and offices in the vicinity providing opportunities for employment.



The economic development of the city depends on its Infrastructural growth. People residing in this vicinity of a city have a custom and business facility of surrounding area. They can do their one stop shopping and distribution within a few kilometres radius. Also, hotels, restaurants can be found in the large number around the town which help to boost tourism. Many people prefer places with numerous employment opportunities, modern infrastructure and an easy environment. The presence of these factors at Kharghar, makes it an ideal place for living. With increasing infrastructure in all fields, Kharghar is attracting new people and corporate to invest in this area. This is a fact that can be seen by visiting and residing here.













CREATED TO SWEEP YOU
OFF YOUR FEET IN
A WAY THAT WILL RIVAL POETS
AND THEIR PAEANS.

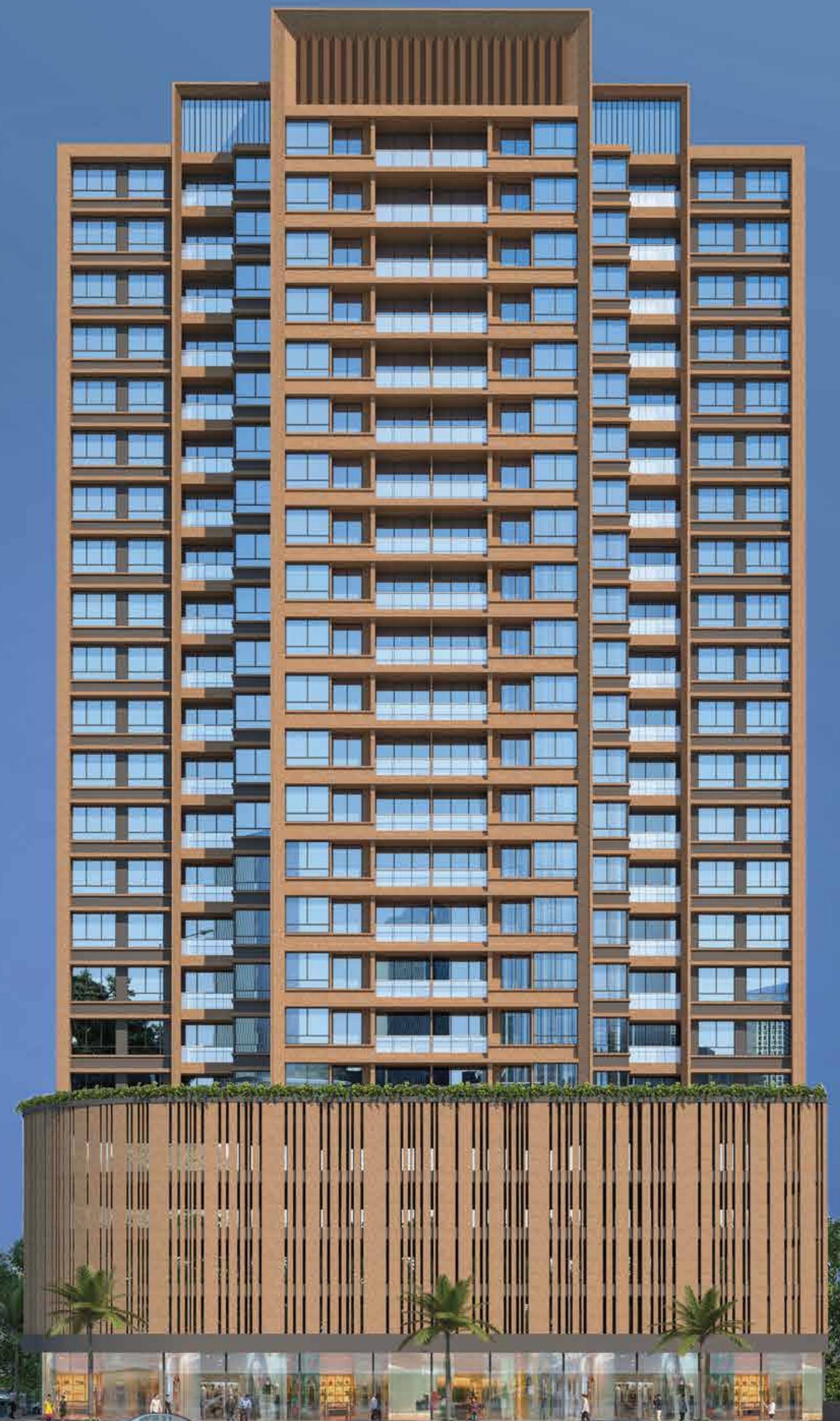
INTRODUCING

PLATINUM
PARK SYDE
SECTOR 30, KHARGHAR

PLATINUM GROUP'S RESIDENTIAL MARVEL

PROJECTS HALLMARKS

-  CIDCO Tender Plot.
-  Located amidst one of the prime locations of Kharghar.
-  Plot located on 35m x 11m x 11m wide 3 side road.
-  Super Sized 2 & 3 BHK Flats.
-  Premium commercial spaces on Ground Floor.
-  Opulent entrance Italian Marble lobby with elegant waiting lounge.
-  Recreational Amenities with Lush Greenery @ 5th floor podium level.
-  Private entrance Lobby for owners.
-  Seperate service Lift.
-  4 Level Car Parking space from First to Fourth podium Floor.
-  3 tier security with CCTV surveillance system.
-  Multi Apartment & Video Door Phone in each Flats.



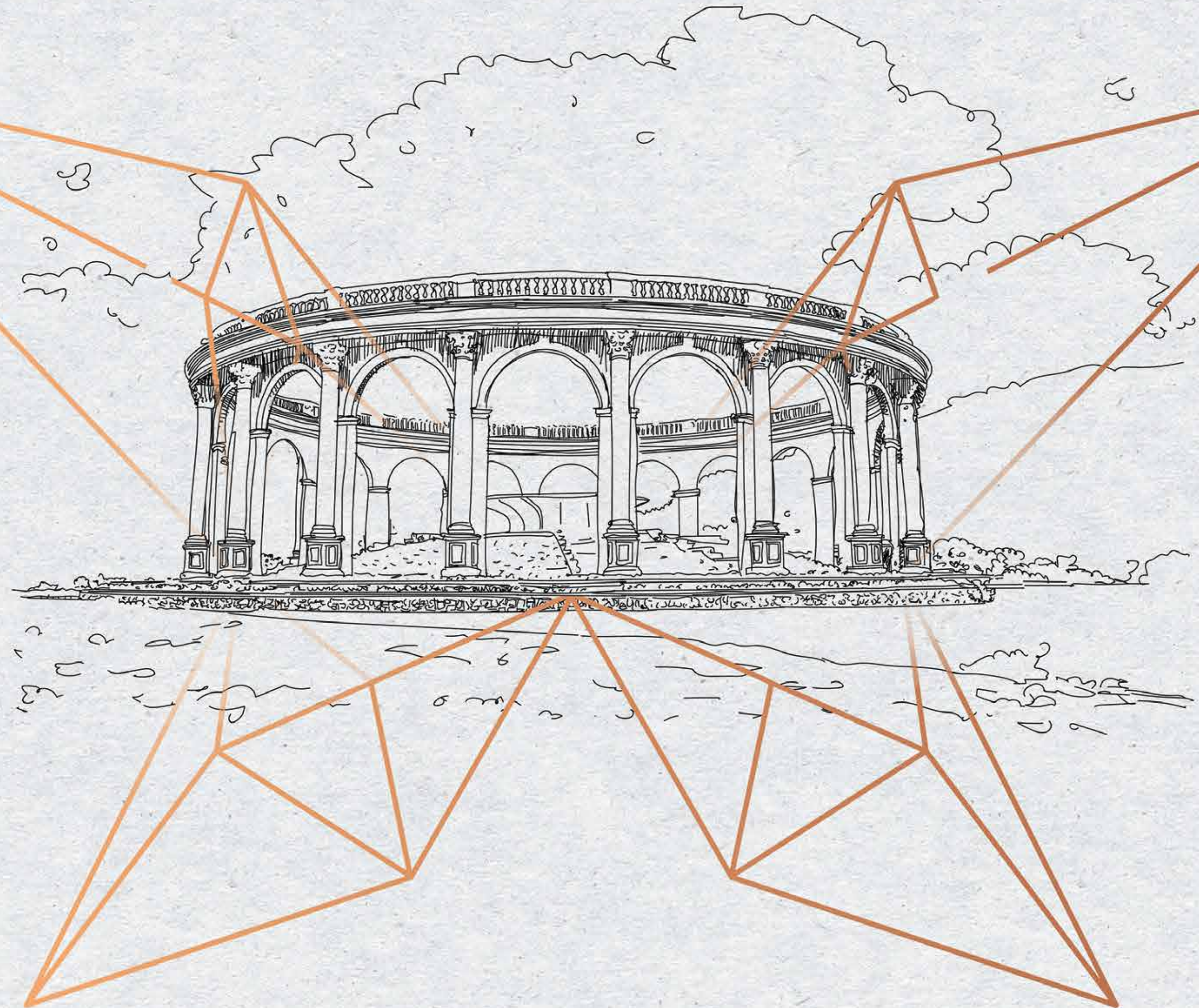
Actual Panoramic
VIEW
FROM OUR SITE



Kharghar,

**SECTOR 30-35,
MAIN ROAD.
A LOCATION THAT'S
THE VISITING CARD
OF THE FUTURE.**

PARK SYDE is located at Kharghar, Sector 30. A neighbourhood that's a gateway of opportunities. Kharghar, Sector 30 is an ode to the future. In more ways than one. It's far away from the madding crowd and the cacophony nevertheless, is seamlessly connected with the Maximum City. And in case you are wondering if the pin-code is home to a plethora of conveniences then we can assure you that from gastronomical outlets to state-of-the-art healthcare facilities; from educational institutions to retail destinations; everything that one covets in an elite neighbourhood is just a few minutes drive.





WE DON'T
Mollycoddle
PEOPLES'
EGOS.

ALAS! OUR
Amenities
THINK
DIFFERENTLY!

FOR INSTANCE...THE LOBBY
ON THE GROUND FLOOR OFFERS
The best sneak peek
OF THE ONES
WHO LIVE AT PARK SYDE.

Sometimes, one needs to judge the book by its cover.

Sometimes, the first impression is indeed the last impression.

Looks aren't always deceptive.

But, then exceptions are never the examples!

The floor of the ground lobby at Park Syde wears
an Italian marble finish.



SHOT AT PLATINUM CRESCENZO



AN ULTIMATE RETREAT
for Unmatched
INDULGENCES

Explore the World of
Handpicked Amenities

THOSE WHO KNOW HOW
TO MAKE *Waves* MAKE
IT WHEREVER THEY GO.

They may be rebels with a cause.
They may be rebels without a cause.
However; whatever they do, creates a splash.
And how!

An azure pool. And a pool for your little ones.

SHOT AT PLATINUM PALMWOODS



*'Master of all trades
and Jack of none'*
IS HOW WE DEFINE IT.

Versatility doesn't need to crow about itself from
the rooftops.

It owns every playground, it plays on.

It dons many hats.

And excels in every avatar.

A multipurpose hall that elevates happiness in celebrations.



SHOT AT PLATINUM PALMWOODS

Sculpt YOURSELF.

Shed your calories.

Lose your inhibitions.
Invest your blood, sweat and tears.

Gear up for milestones.

A state-of-the-art gymnasium.

SHOT AT PLATINUM PALMWOODS



MAKE IN INDIA
HAPPENED *Centuries* AGO.

Train your focus and strike up a meaningful conversation with closed eyes, deep breaths and peaceful surroundings.

SHOT AT PLATINUM PALMWOODS



INDOOR *Games* AREN'T
PLAYED ON MOBILE SCREENS
WITH THE TAP OF FINGERS.

You might sweat less nevertheless your grey cells work like clockwork.

Whether it's a chess board or the good old carrom board.

They offer priceless life lessons within hours.

Something that even an IVY League University can't in years.

A few hours can offer you enough insights for a lifetime.

SHOT AT PLATINUM PALMWOODS



THE SUN, RAIN, MUD,
STAINS, CHEERS, WHISTLES
AND CLAPS SHAPE
Childhoods BETTER THAN
A MOBILE SCREEN.

The Hand of God and Gods of Cricket aren't
born on mobile screens.

Grand Slams aren't won on a laptop.

Childhoods thrive in the greens.

Because; even a child's imagination and
dreams need a runway to fly.

Sunshine greets your little ones once they step out.

SHOT AT PLATINUM PALMWOODS



OUR PARKING SPACE
IS A *Preface*
TO SUCCESS STORIES.

It doesn't have to be a German car.

Or an Italian one.

Even though most of them might have German
and Italian roots.

We have enough space for inspiring the next
generation.

Sometimes even inspiration has wheels.

SHOT AT PLATINUM PALMWOODS



PRIVACY IS AN *Invisible*
AMENITY AT PARK SYDE.

Surprise loves privacy.

Love loves privacy.

Ambition loves privacy.

Congeniality loves privacy.

We respect your presence and trust in us, in more ways than one.

SHOT AT PLATINUM PALMWOODS



THERE'S NO ROOM
FOR *Fear* HERE.

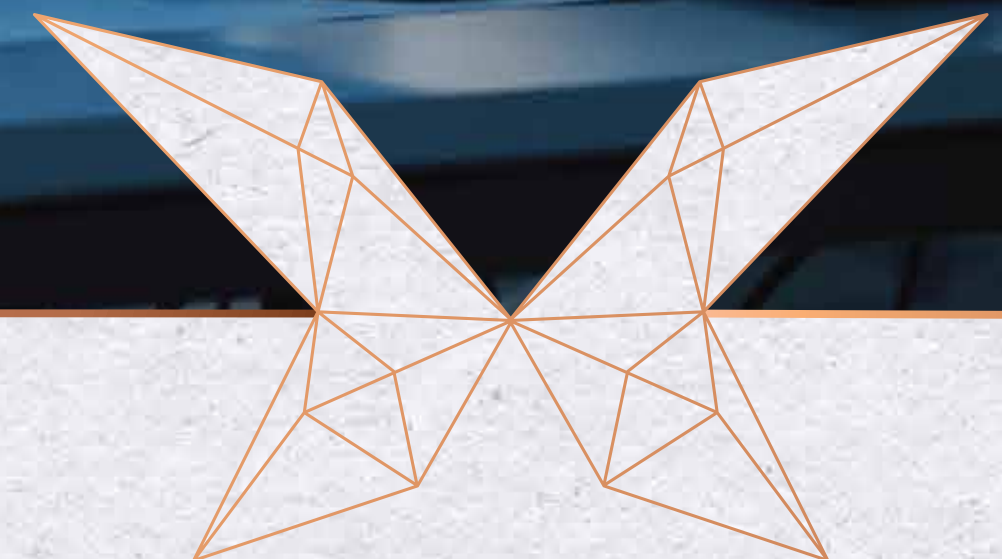
Home is where the heart is.

And we fight your fears.

We don't let them sneak into your mind.

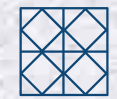
We spare no trouble to ensure you with
peerless multi-tier security.

A three-tier digitised security system ensures
that peace never leaves you.



Imagine style and magnificence.
Experience the best of *Everything*

SPECIFICATION



FLOORING

- 32" X64" Vitrified flooring in all rooms.
- Designer flooring in all toilets.



WALLS AND PAINTS

- Luster finish paints for internal walls of Asian / ICI Dulux brand.
- All Weather proof Acrylic paints for external walls of Asian / ICI Dulux brand.
- POP / Gypsum finished internal walls.



KITCHEN

- Composite Marble Kitchen platform with Service Platform and RR Franke / Carysil make Sink.
- Designer glazed tiles upto beam height.
- Space ear-marked for Washing Machine & Refrigerator.
- Provision for Water purifier, Mixer, Exhaust Fan, & Microwave point.



ELECTRIFICATION

- Heavy Concealed copper gauge wiring of RR Kable/Finolex
- Circuit Breaker ELCB/MCB's of Legrand / Norisys make
- Modular switches of Legrand / Norisys make.



DOORS & WINDOWS

- Decorative laminated doors with Godrej/Yale security locks.
- Heavy section coated Aluminum sliding windows.



TOILETS

- 48" X 24" Designer glazed tiles upto beam level.
- Premium quality sanitary wares of Kohler/Grohe make.
- Premium Quality C. P. Fittings of Kohler/Grohe make.
- Provision for Exhaust & Geyser point.



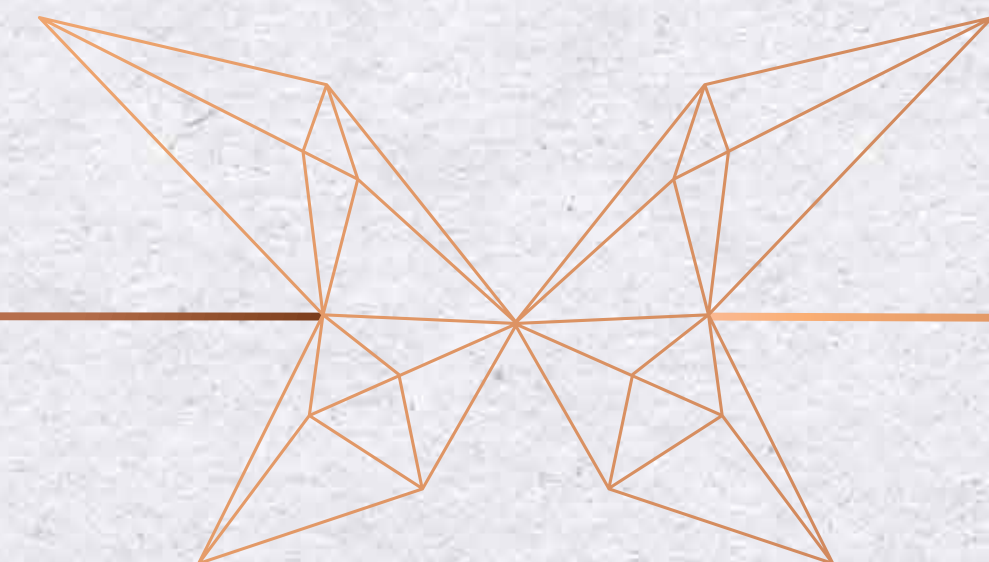
SECURITY

- Multi Apartment video door phone of Godrej/Yale make.
- 24x7 Round the clock 3 tier Security System.
- CCTV Surveillance system for common areas.



GENERAL

- High Speed Automatic Elevators of KONE/OTIS make.
- DG Set backup for Elevators & Common area.
- Designer Lift Lobby on all floors.
- Elegant Building Entrance Gate.
- Modern Fire Security System.
- Best in Class Racility management team.



CRAFTED TO
Enchant You



Precision
AT ITS BEST

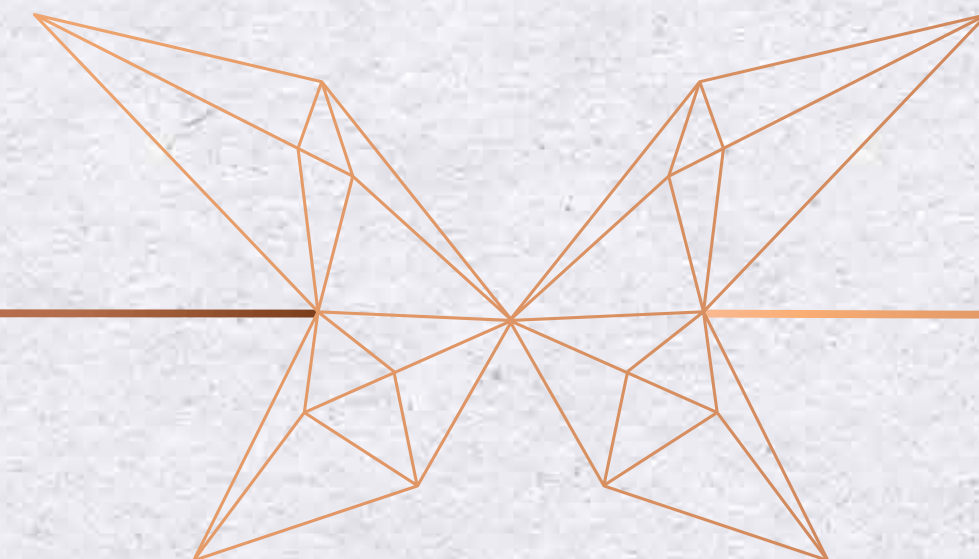


6th To 12th Typical Floor Plan

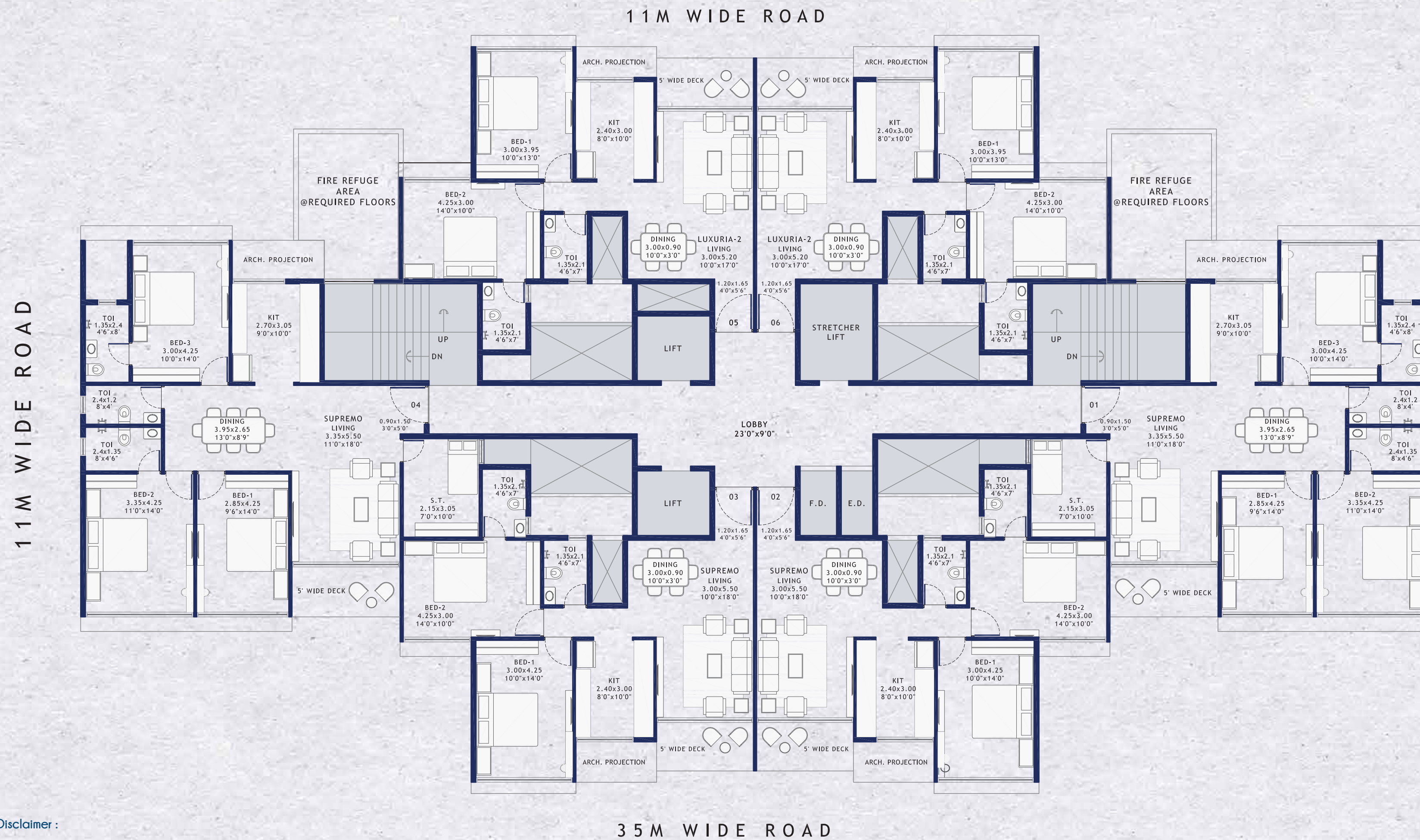


Disclaimer :

- No elevation feature are shown in drawings it will be incorporate at time of executions.
- All sizes are from unfinished wall to wall.
- Room sizes are inclusive of enclose balcony if provided.
- Shown dimensions in feet and inches are round off
- Actual sizes of finished unit might be lesser than shown due to plastering, putti, tiling or due structural members like column offset and beam offset.

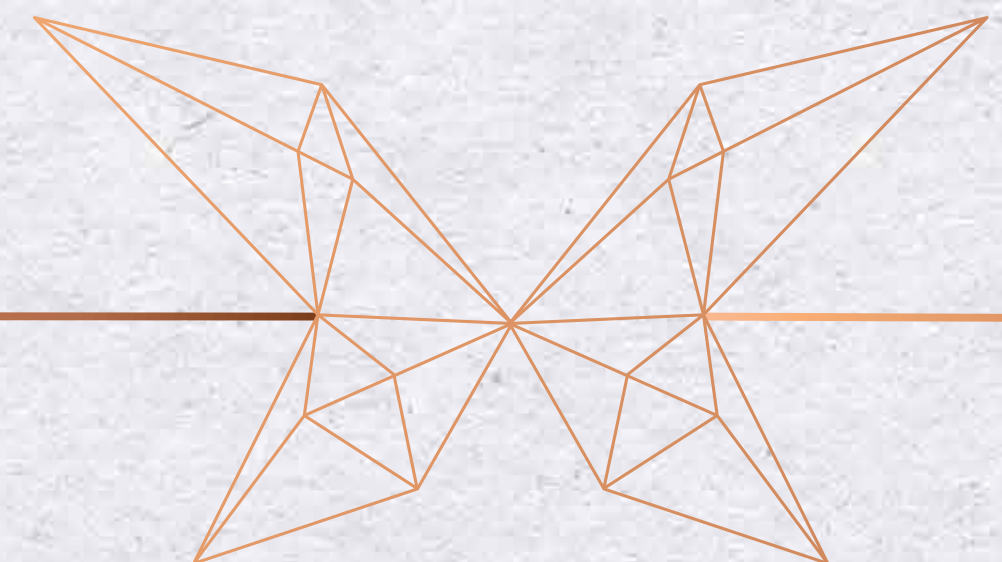


13th To 22nd Typical Floor Plan

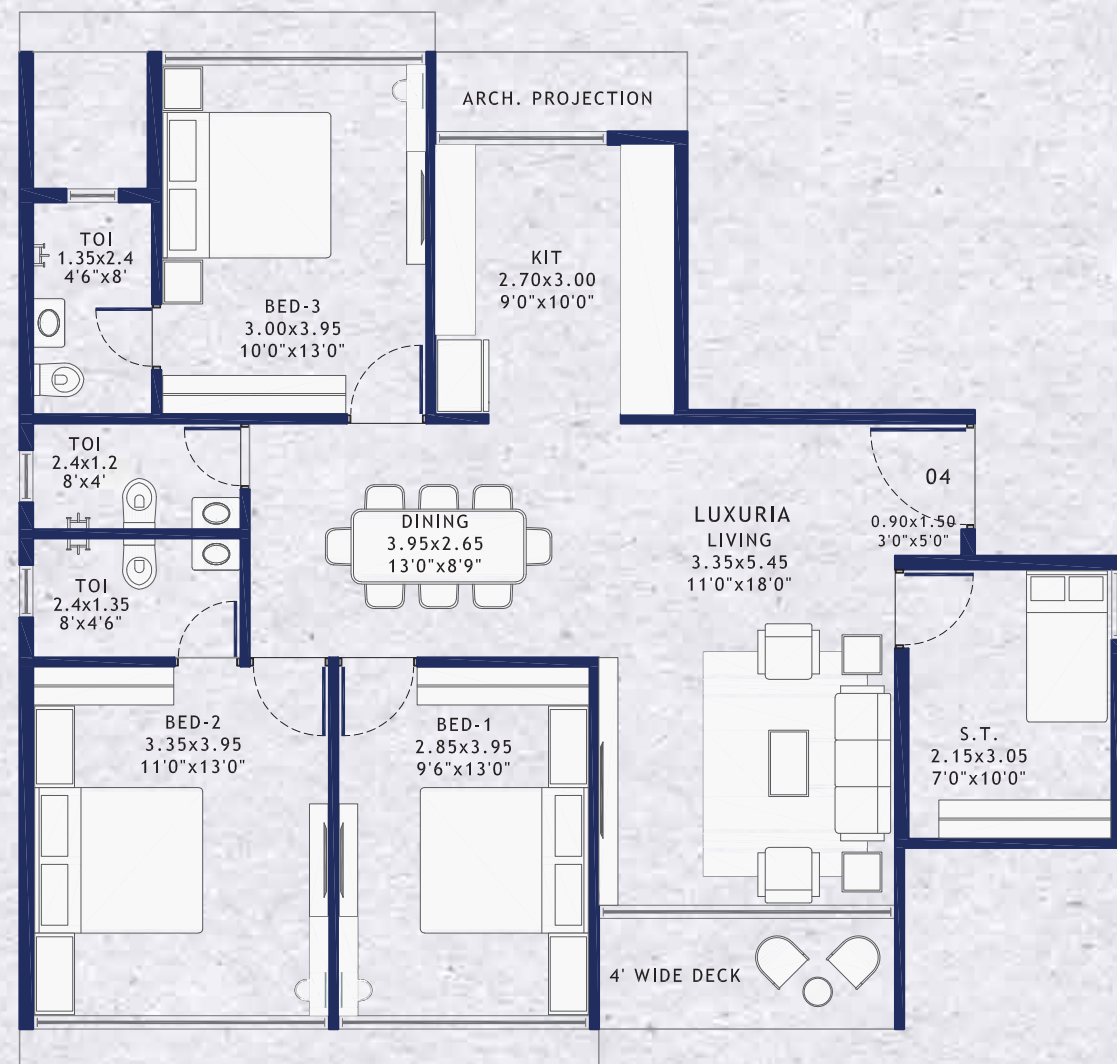


Disclaimer :

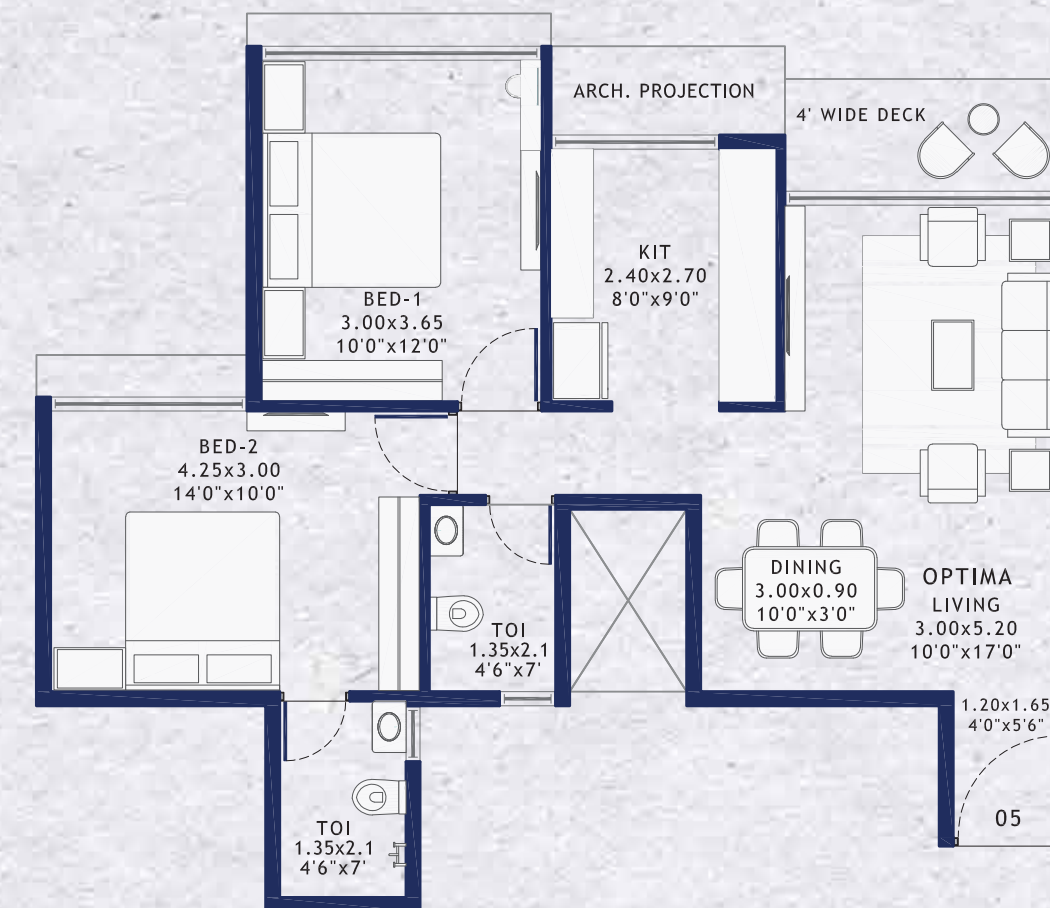
- No elevation feature are shown in drawings it will be incorporate at time of executions.
- All sizes are from unfinished wall to wall.
- Room sizes are inclusive of enclose balcony if provided.
- Shown dimensions in feet and inches are round off
- Actual sizes of finished unit might be lesser than shown due to plastering, putti, tiling or due structural members like column offset and beam offset.



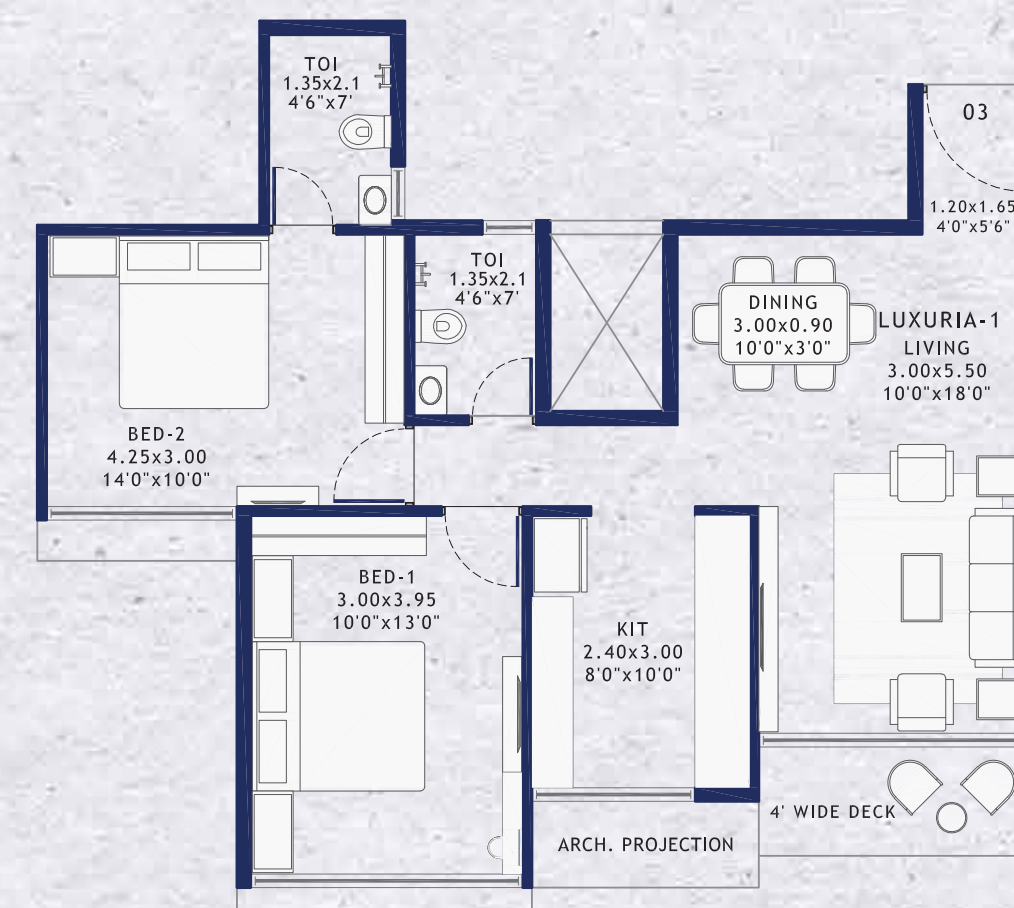
6th To 12th Floor Unit Plans



3 BED LUXURIA



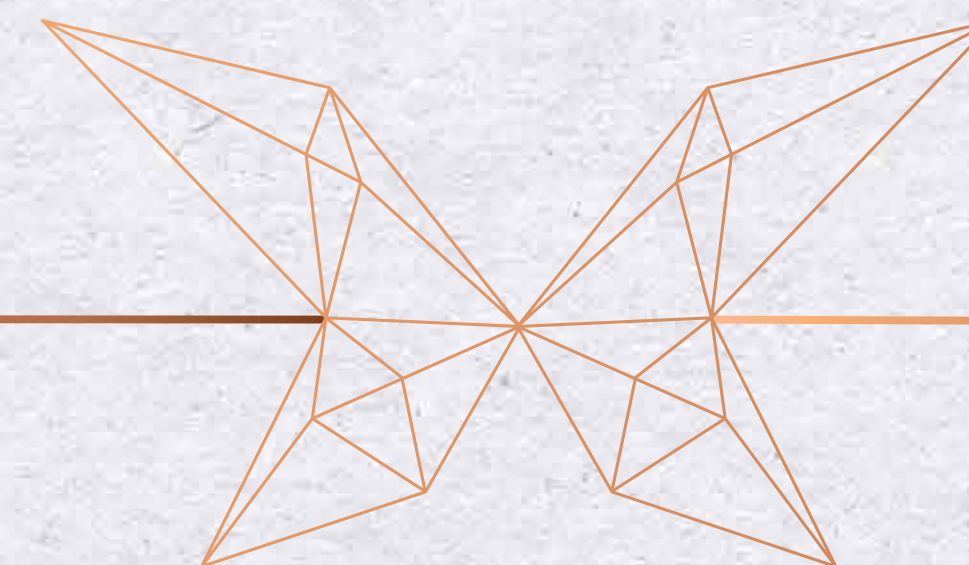
2 BED OPTIMA



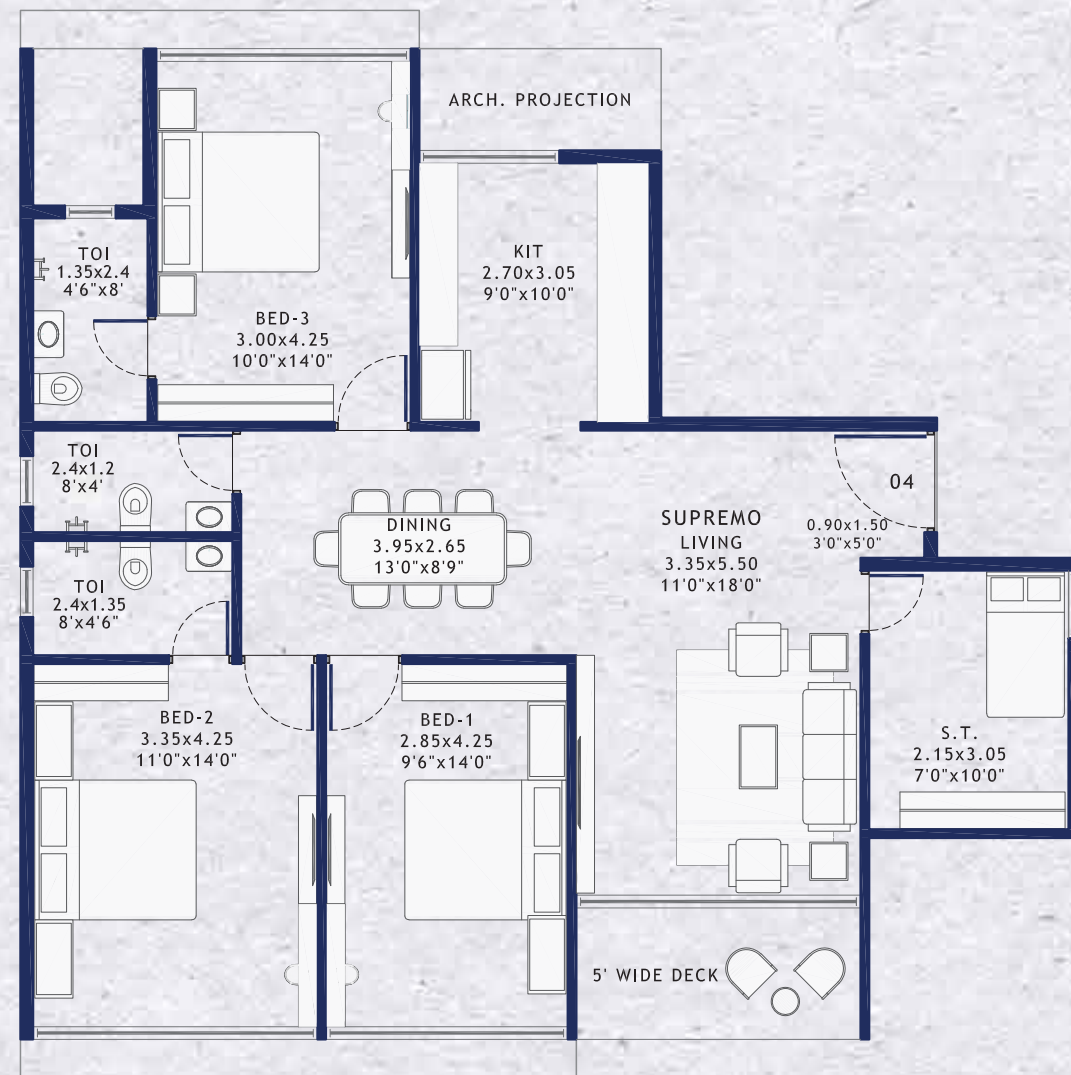
2 BED LUXURIA-1

Disclaimer :

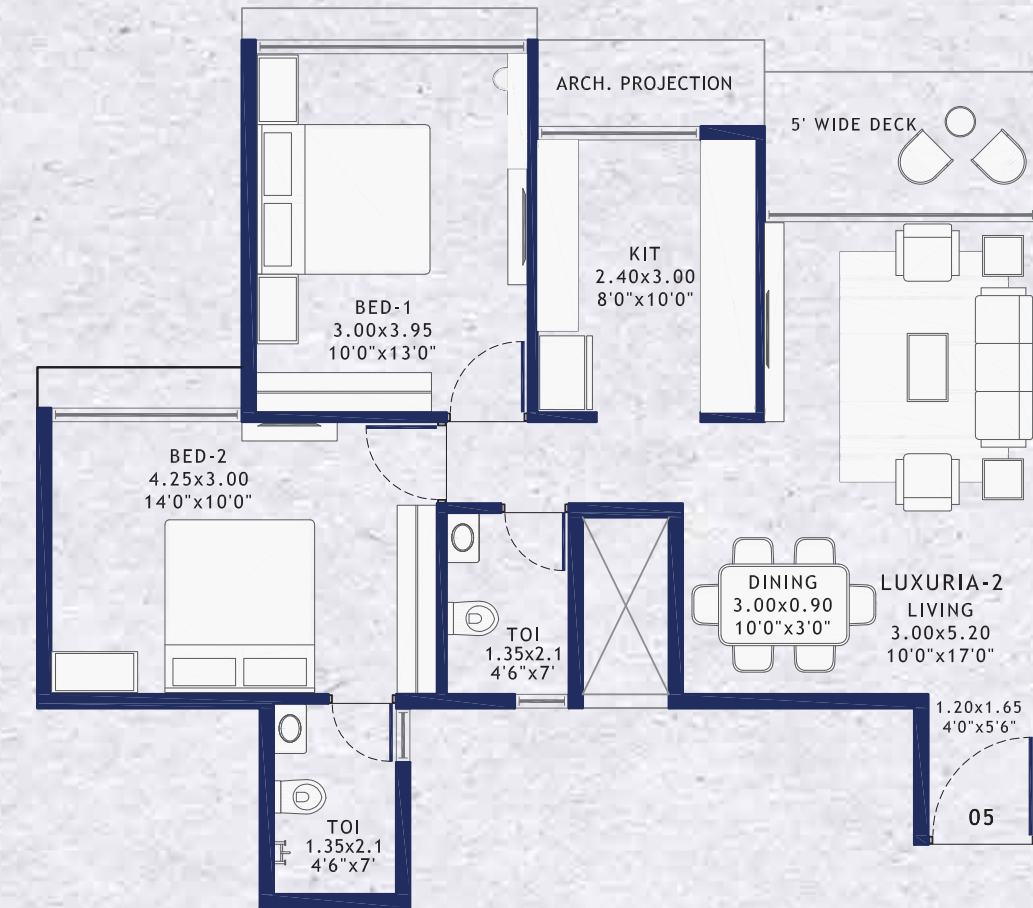
- No elevation feature are shown in drawings it will be incorporate at time of executions.
- All sizes are from unfinished wall to wall.
- Room sizes are inclusive of enclose balcony if provided.
- Shown dimensions in feet and inches are round off
- Actual sizes of finished unit might be lesser than shown due to plastering, putti, filling or due structural members like column offset and beam offset.



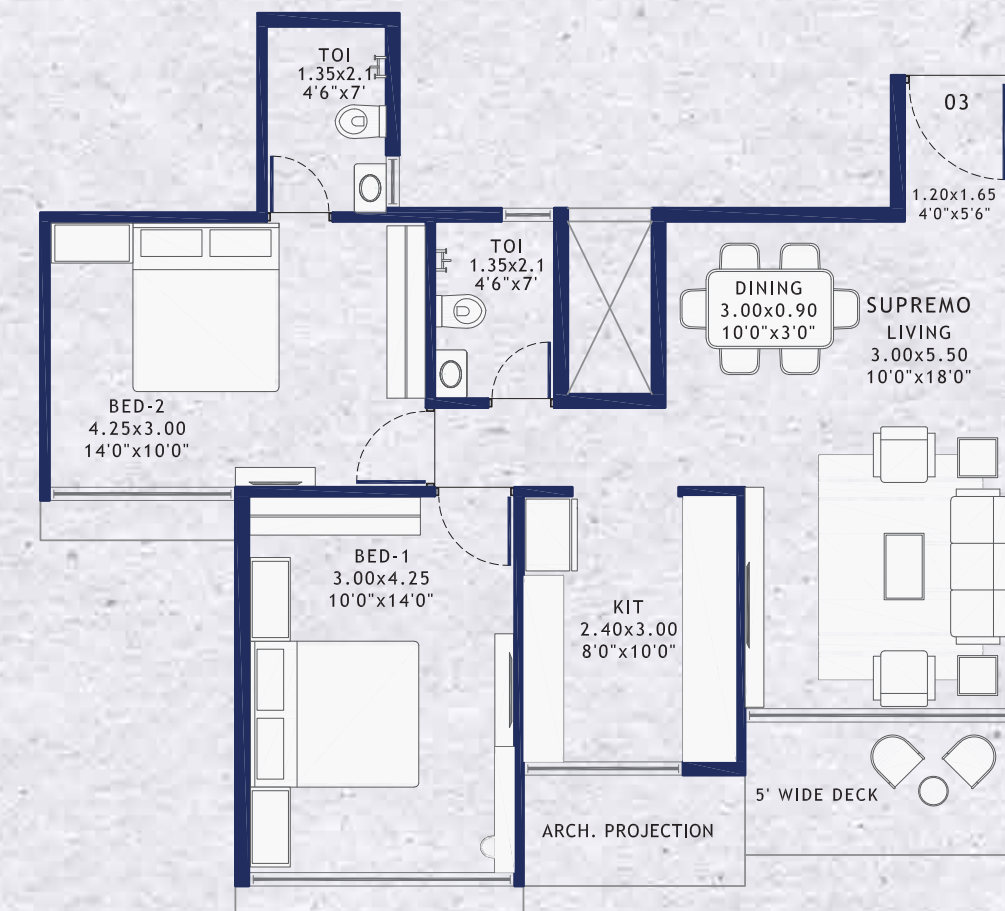
13th To 22nd Floor Unit Plans



3 BED SUPREMO



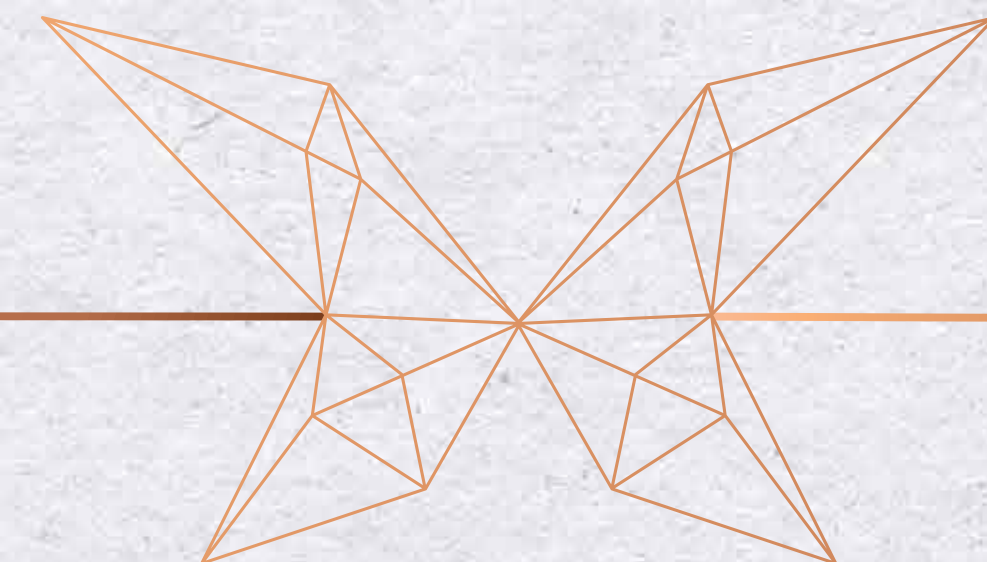
2 BED LUXURIA 2

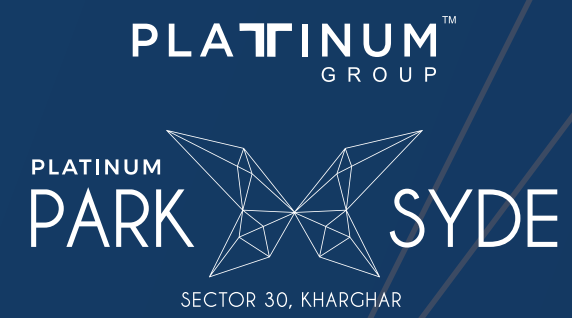


2 BED SUPREMO

Disclaimer :

- No elevation feature are shown in drawings it will be incorporate at time of executions.
- All sizes are from unfinished wall to wall.
- Room sizes are inclusive of enclose balcony if provided.
- Shown dimensions in feet and inches are round off
- Actual sizes of finished unit might be lesser than shown due to plastering, putti, tiling or due structural members like column offset and beam offset.





Developers:
PALACIO VENTURES


Site Add.: Plot 62C, Sector 30, Kharghar, Navi Mumbai.

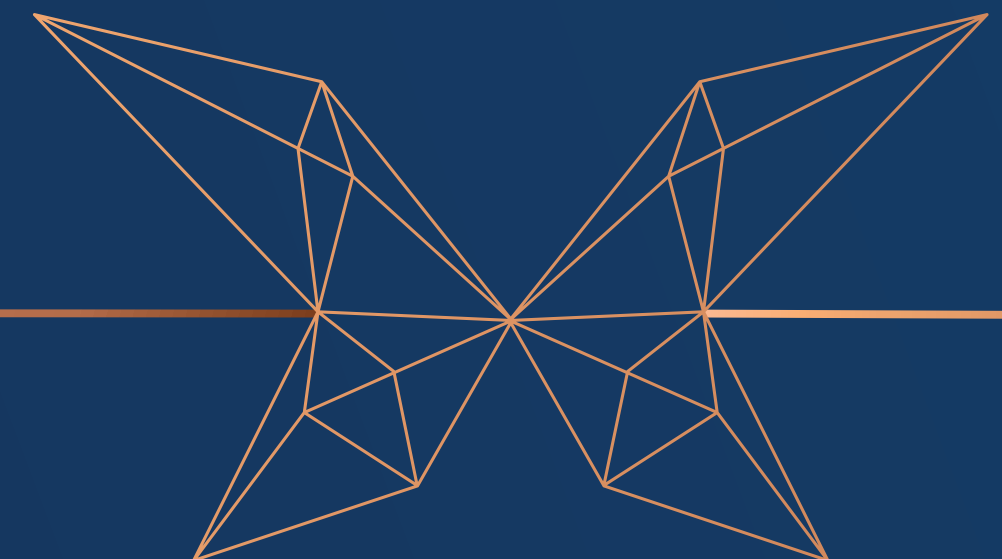
Office Add.: B-84, Aggarwal Trade Centre, Plot No.62, Sector - 11, CBD Belapur, Navi Mumbai - 400 614,

Email : info@theplatinumgroup.co.in | www.theplatinumgroup.co.in

For Bookings Please Call : +91 97695 94355 | +91 89768 96677

Project Financed By : Aditya Birla Housing Finance Limited

 MAHARERA REGISTRATION P52000046110 <http://maharera.mahaonline.gov.in>





www.theplatinumgroup.co.in